

ALCAM antibody

Product Information

Catalog No.:	FNab00280
Size:	100µg
Form:	liquid
Purification:	Immunogen affinity purified
Purity:	≥95% as determined by SDS-PAGE
Host:	Rabbit
Clonality:	polyclonal
Clone ID:	None
IsoType:	IgG
Storage:	PBS with 0.02% sodium azide and 50% glycerol pH 7.3, -20°C for 12 months(Avoid repeated freeze / thaw cycles.)

Background

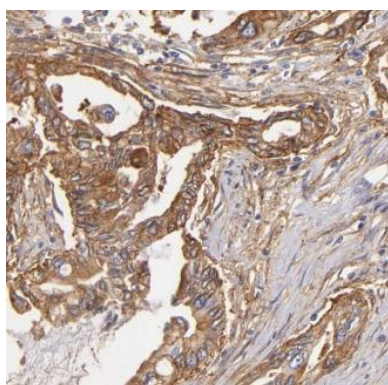
Cell adhesion molecule that mediates both heterotypic cell-cell contacts via its interaction with CD6, as well as homotypic cell-cell contacts(PubMed:7760007, PubMed:15496415, PubMed:15048703, PubMed:16352806, PubMed:23169771, PubMed:24945728). Promotes T-cell activation and proliferation via its interactions with CD6(PubMed:15048703, PubMed:16352806, PubMed:24945728). Contributes to the formation and maturation of the immunological synapse via its interactions with CD6(PubMed:15294938, PubMed:16352806). Mediates homotypic interactions with cells that express ALCAM(PubMed:15496415, PubMed:16352806). Required for normal hematopoietic stem cell engraftment in the bone marrow(PubMed:24740813). Mediates attachment of dendritic cells onto endothelial cells via homotypic interaction(PubMed:23169771). Inhibits endothelial cell migration and promotes endothelial tube formation via homotypic interactions(PubMed:15496415, PubMed:23169771). Required for normal organization of the lymph vessel network. Required for normal hematopoietic stem cell engraftment in the bone marrow. Plays a role in hematopoiesis; required for normal numbers of hematopoietic stem cells in bone marrow. Promotes in vitro osteoblast proliferation and differentiation(By similarity). Promotes neurite extension, axon growth and axon guidance; axons grow preferentially on surfaces that contain ALCAM. Mediates outgrowth and pathfinding for retinal ganglion cell axons(By similarity). Isoform 3: Inhibits activities of membrane-bound isoforms by competing for the same interaction partners. Inhibits cell attachment via homotypic interactions. Promotes endothelial cell migration. Inhibits endothelial cell tube formation.

Immunogen information

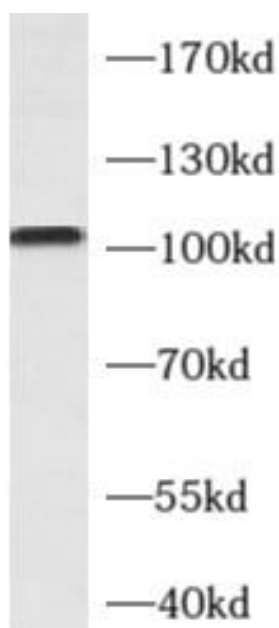
Immunogen:	activated leukocyte cell adhesion molecule
Synonyms:	CD166 antigen Activated leukocyte cell adhesion molecule ALCAM MEMD
Observed MW:	110 kDa
Uniprot ID :	Q13740

Application

Reactivity:	Human
Tested Application:	ELISA, IHC, WB
Recommended dilution:	WB: 1:200-1:2000; IHC: 1:20-1:200
Image:	



Immunohistochemistry of paraffin-embedded human breast cancer using FNab00280(ALCAM antibody) at dilution of 1:50



human liver tissue were subjected to SDS PAGE followed by western blot with FNab00280(ALCAM antibody) at dilution of 1:500