

AKAP10 antibody

Product Information

Catalog No.:	FNab00250
Size:	100µg
Form:	liquid
Purification:	Immunogen affinity purified
Purity:	≥95% as determined by SDS-PAGE
Host:	Rabbit
Clonality:	polyclonal
Clone ID:	None
IsoType:	IgG
Storage:	PBS with 0.02% sodium azide and 50% glycerol pH 7.3, -20°C for 12 months(Avoid repeated freeze / thaw cycles.)

Background

Differentially targeted protein that binds to type I and II regulatory subunits of protein kinase A and anchors them to the mitochondria or the plasma membrane. Although the physiological relevance between PKA and AKAPS with mitochondria is not fully understood, one idea is that BAD, a proapoptotic member, is phosphorylated and inactivated by mitochondria-anchored PKA. It cannot be excluded too that it may facilitate PKA as well as G protein signal transduction, by acting as an adapter for assembling multiprotein complexes. With its RGS domain, it could lead to the interaction to G-alpha proteins, providing a link between the signaling machinery and the downstream kinase(By similarity).

Immunogen information

Immunogen:	A kinase(PRKA) anchor protein 10
Synonyms:	A-kinase anchor protein 10, mitochondrial (AKAP-10) Dual specificity A kinase-anchoring protein 2 (D-AKAP-2) Protein kinase A-anchoring protein 10 (PRKA10) AKAP10
Observed MW:	74 kDa
Uniprot ID :	O43572

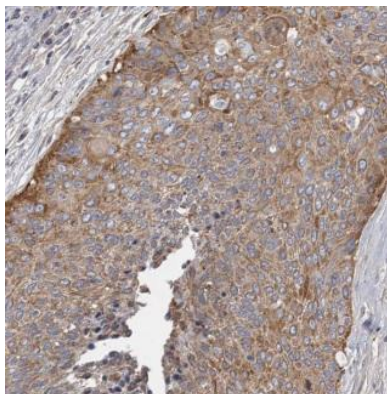
Application

Reactivity:	Human, Mouse, Rat
-------------	-------------------

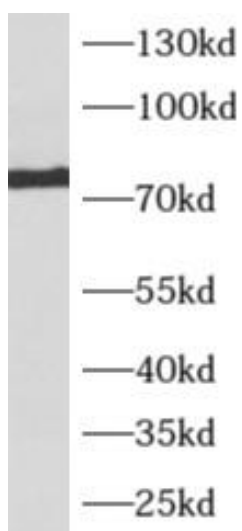
Tested Application: ELISA, WB, IHC

Recommended dilution: WB: 1:500-1:5000; IHC: 1:20-200

Image:



Immunohistochemistry of paraffin-embedded human cervical cancer using FNab00250(AKAP10 antibody) at dilution of 1:100



HEK-293 cells were subjected to SDS PAGE followed by western blot with FNab00250(AKAP10 antibody) at dilution of 1:500