

## ADHFE1 antibody

### Product Information

Catalog No.:	FNab00168
Size:	100µg
Form:	liquid
Purification:	Immunogen affinity purified
Purity:	≥95% as determined by SDS-PAGE
Host:	Rabbit
Clonality:	polyclonal
Clone ID:	None
IsoType:	IgG
Storage:	PBS with 0.02% sodium azide and 50% glycerol pH 7.3, -20°C for 12 months(Avoid repeated freeze / thaw cycles.)

### Background

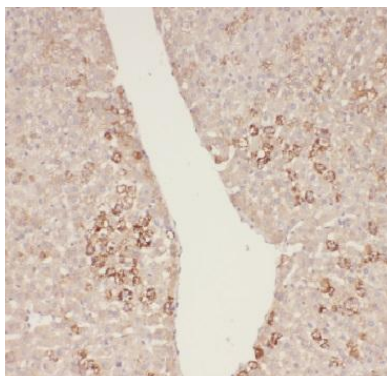
Catalyzes the cofactor-independent reversible oxidation of gamma-hydroxybutyrate(GHB) to succinic semialdehyde(SSA) coupled to reduction of 2-ketoglutarate(2-KG) to D-2-hydroxyglutarate(D-2-HG). D,L-3-hydroxyisobutyrate and L-3-hydroxybutyrate(L-3-OHB) are also substrates for HOT with 10-fold lower activities.

### Immunogen information

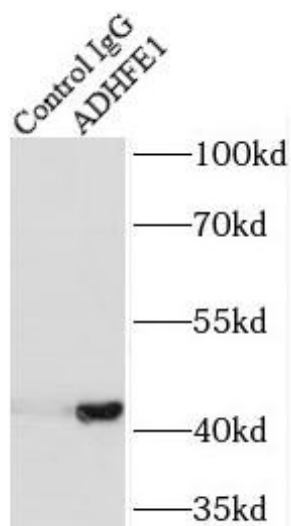
Immunogen:	alcohol dehydrogenase, iron containing, 1
Synonyms:	Hydroxyacid-oxoacid transhydrogenase, mitochondrial (HOT) Alcohol dehydrogenase iron-containing protein 1 (ADHFe1) Fe-containing alcohol dehydrogenase ADHFE1
Observed MW:	50 kDa
Uniprot ID :	Q8IWW8

### Application

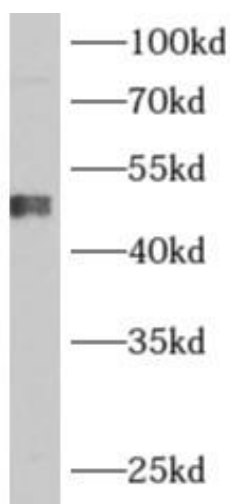
Reactivity:	Human, Mouse, Rat
Tested Application:	ELISA, WB, IHC, IP
Recommended dilution:	WB: 1:1000-1:10000; IHC: 1:20-1:200; IP: 1:200-1:1000
Image:	



Immunohistochemistry of paraffin-embedded human liver tissue slide using FNab00168(ADHFE1 Antibody) at dilution of 1:50



IP Result of anti-ADHFE1 (IP:FNab00168, 4ug; Detection:FNab00168 1:300) with mouse heart tissue lysate 4000ug.



mouse heart tissue were subjected to SDS PAGE followed by western blot with FNab00168(ADHFE1 antibody) at dilution of 1:1000