

ACTR1B antibody

Product Information

| | |
|---------------|--|
| Catalog No.: | FNab00126 |
| Size: | 100µg |
| Form: | liquid |
| Purification: | Immunogen affinity purified |
| Purity: | ≥95% as determined by SDS-PAGE |
| Host: | Rabbit |
| Clonality: | polyclonal |
| Clone ID: | None |
| IsoType: | IgG |
| Storage: | PBS with 0.02% sodium azide and 50% glycerol pH 7.3, -20°C for 12 months(Avoid repeated freeze / thaw cycles.) |

Background

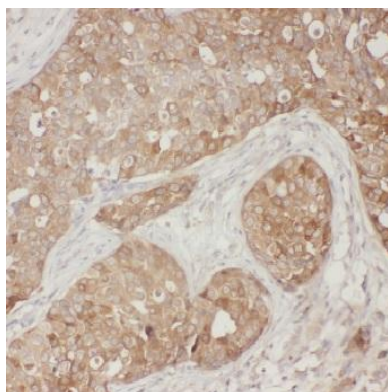
Component of a multi-subunit complex involved in microtubule based vesicle motility. It is associated with the centrosome.

Immunogen information

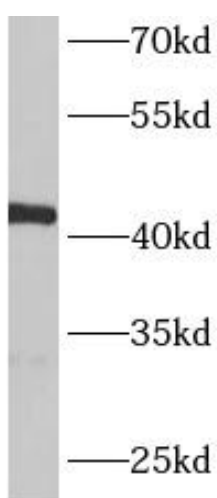
| | |
|--------------|--|
| Immunogen: | ARP1 actin-related protein 1 homolog B, centractin beta(yeast) |
| Synonyms: | Beta-centractin Actin-related protein 1B (ARP1B) ACTR1B CTRN2 |
| Observed MW: | 42 kDa |
| Uniprot ID : | P42025 |

Application

| | |
|-----------------------|---|
| Reactivity: | Human, Mouse, Rat |
| Tested Application: | ELISA, IHC, IF, WB |
| Recommended dilution: | WB: 1:200-1:2000; IHC: 1:20-1:200; IF: 1:20-1:200 |
| Image: | |



Immunohistochemistry of paraffin-embedded human breast cancer using FNab00126(ACR1B antibody) at dilution of 1:50



mouse heart tissue were subjected to SDS PAGE followed by western blot with FNab00126(ACR1B Antibody) at dilution of 1:600