

## ACTL6A antibody

### Product Information

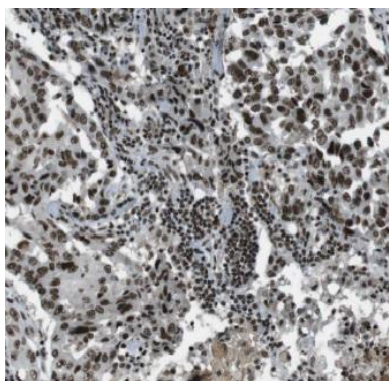
Catalog No.:	FNab00118
Size:	100µg
Form:	liquid
Purification:	Immunogen affinity purified
Purity:	≥95% as determined by SDS-PAGE
Host:	Rabbit
Clonality:	polyclonal
Clone ID:	None
IsoType:	IgG
Storage:	PBS with 0.02% sodium azide and 50% glycerol pH 7.3, -20°C for 12 months(Avoid repeated freeze / thaw cycles.)

### Immunogen information

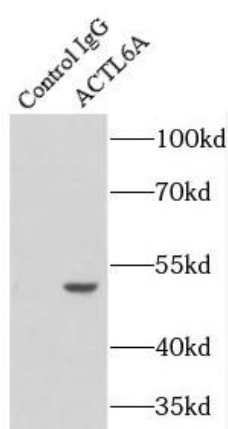
Immunogen:	actin-like 6A
Synonyms:	Actin-like protein 6A 53 kDa BRG1-associated factor A Actin-related protein Baf53a ArpNbeta BRG1-associated factor 53A (BAF53A) INO80 complex subunit K ACTL6A BAF53 BAF53A INO80K
Observed MW:	47 kDa
Uniprot ID :	O96019

### Application

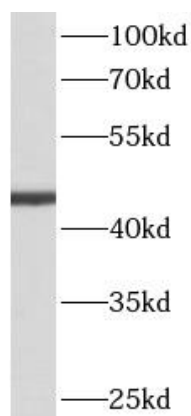
Reactivity:	Human, Mouse, Rat
Tested Application:	ELISA, WB, IHC, IP
Recommended dilution:	WB: 1:500-1:5000; IHC: 1:20-1:200; IP: 1:200-1:2000
Image:	



Immunohistochemistry of paraffin-embedded human ovary using FNab00118(ACTL6A antibody) at dilution of 1:50



IP Result of anti-ACTL6A (IP:FNab00118, 4ug; Detection:FNab00118 1:500) with HeLa cells lysate 1200ug.



K-562 cells were subjected to SDS PAGE followed by western blot with FNab00118(ACTL6A antibody) at dilution of 1:1000