

Acetylated tubulin (Lys40) antibody

Product Information

Catalog No.:	FNab00082
Size:	100µg
Form:	liquid
Purification:	Protein A+G purification
Purity:	≥95% as determined by SDS-PAGE
Host:	Mouse
Clonality:	monoclonal
Clone ID:	6A10
IsoType:	IgG1
Storage:	PBS with 0.02% sodium azide and 50% glycerol pH 7.3, -20°C for 12 months(Avoid repeated freeze / thaw cycles.)

Background

Tubulin, composed of heterodimers of alpha and beta tubulin, is the mainly component of microtubules which play important roles in cell motility, mitosis, and intracellular vesicle transport. Both alpha and beta tubulin undergo several posttranslational modifications such as polyglutamylation and acetylation/deacetylation. Tubulin acetylation occurs on lysine-40 at the N-terminal of alpha tubulin and is conserved across species. The histone deacetylase HDAC6 and SIRT2 has been identified as tubulin deacetylases. Reversible acetylation of alpha tubulin may be implicated in regulating microtubule stability, cell motility, and axon regeneration. The level of acetylated tubulin has been linked to epithelial malignancies and sensitivity to chemotherapy. In addition, acetylated tubulin has been widely used as a marker for primary cilia. This antibody is specific to the acetylated tubulin; it does not recognize non-acetylated tubulin.

Immunogen information

Immunogen:	tubulin, alpha 1a
Synonyms:	Tubulin alpha-1A chain Alpha-tubulin 3 Tubulin B-alpha-1 Tubulin alpha-3 chain Detyrosinated tubulin alpha-1A chain TUBA1A TUBA3
Observed MW:	52 kDa
Uniprot ID :	Q71U36

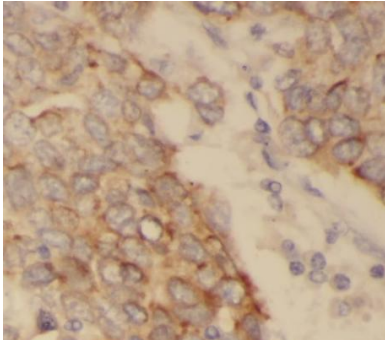
Application

Reactivity:	Human, Mouse, Rat, Dog
-------------	------------------------

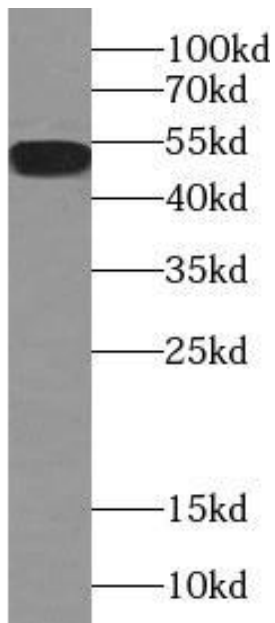
Tested Application: ELISA, WB, IHC, IF

Recommended dilution: WB: 1:500-1:5000; IF: 1:20-1:200; IHC: 1:20-1:200

Image:



Immunohistochemistry of paraffin-embedded human lung cancer tissue slide using FNab00082(Acetylated tubulin(Lys40) Antibody) at dilution of 1:50



L02 cells were subjected to SDS PAGE followed by western blot with FNab00082(Acetylated tubulin(Lys40) Antibody) at dilution of 1:1000