

## **FITC Anti-Human CD23 Antibody(EBVCS2)**

### **Product Information**

|              |  |
|--------------|--|
| Catalog No.: | FITC-30117   |
| Conjugation: | FITC   |
| Size:        | 20T/100T   |
| Form:        | liquid   |
| Host:        | Mouse  |
| Clonality:   | monoclonal   |
| Clone ID:    | EBVCS2   |
| IsoType:     | IgG1, kappa  |
| Storage:     | PBS with 0.1% sodium azide, 1%BSA, pH 7.3, 2-8°C for 12 months<br>(Avoid repeated freeze / thaw cycles.) |

### **Immunogen information**

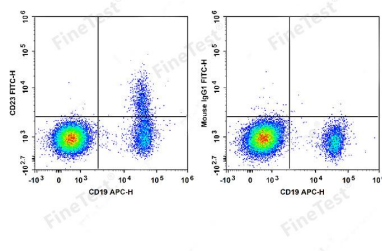
|              |  |
|--------------|--|
| Synonyms:    | Low affinity immunoglobulin epsilon Fc receptor BLAST-2 C-type lectin domain family 4 member J Fc-epsilon-RII Immunoglobulin E-binding factor Lymphocyte IgE receptor Low affinity immunoglobulin epsilon Fc receptor membrane-bound form Low affinity immunoglobulin epsilon Fc receptor soluble form FCER2 CD23A CLEC4J FCE2 IGEBF |
| Uniprot ID : | P06734   |

### **Application**

|                     |       |
|---------------------|-------|
| Reactivity:         | Human |
| Tested Application: | FC    |

Recommended dilution: Volume per test: 5µL. Each lot of this antibody is quality control tested by flow cytometric analysis. The amount of the reagent is suggested to be used 5 µL of antibody per test (million cells in 100 µL staining volume or per 100 µL of whole blood). Please check your vial before the experiment. Since applications vary, the appropriate dilutions must be determined for individual use.

Image:



Staining of normal human peripheral blood cells with APC Anti-Human CD19 Antibody and FITC Anti-Human CD23 Antibody(EBVCS2) (left) or FITC Mouse IgG1, κ Isotype Control (right). Cells in the lymphocytes gate were used for analysis.