

FITC Anti-Human CD146 Antibody(AA98)

Product Information

Catalog No.:	FITC-30113
Conjugation:	FITC
Size:	20T/100T
Form:	liquid
Host:	Mouse
Clonality:	monoclonal
Clone ID:	AA98
IsoType:	IgG2a, kappa
Storage:	PBS with 0.1% sodium azide, 1%BSA, pH 7.3, 2-8°C for 12 months (Avoid repeated freeze / thaw cycles.)

Immunogen information

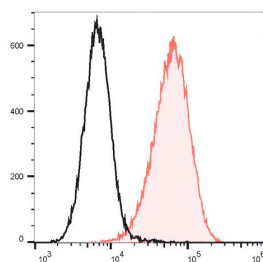
Synonyms:	Cell surface glycoprotein MUC18 Cell surface glycoprotein P1H12 Melanoma cell adhesion molecule Melanoma-associated antigen A32 Melanoma-associated antigen MUC18 S-endo 1 endothelial-associated antigen MCAM MUC18 CD146
Uniprot ID :	P43121

Application

Reactivity:	Human
Tested Application:	FC

Recommended dilution: Volume per test: 5µL. Each lot of this antibody is quality control tested by flow cytometric analysis. The amount of the reagent is suggested to be used 5 µL of antibody per test (million cells in 100 µL staining volume or per 100 µL of whole blood). Please check your vial before the experiment. Since applications vary, the appropriate dilutions must be determined for individual use.

Image:



Staining of Hela cells with FITC Anti-Human CD146 Antibody(AA98) (filled red histogram) or FITC Mouse IgG2a, κ Isotype Control (empty black histogram). Total viable cells were used for analysis.