

FITC Anti-Human CD1a Antibody(OKT-6)

Product Information

Catalog No.:	FITC-30093
Conjugation:	FITC
Size:	20T/100T
Form:	liquid
Host:	Mouse
Clonality:	monoclonal
Clone ID:	OKT-6
IsoType:	IgG1, kappa
Storage:	PBS with 0.1% sodium azide, 1%BSA, pH 7.3, 2-8°C for 12 months (Avoid repeated freeze / thaw cycles.)

Immunogen information

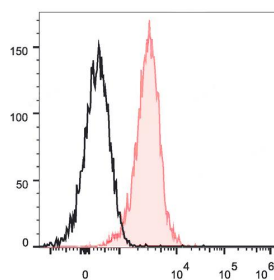
Synonyms:	T-cell surface glycoprotein CD1a T-cell surface antigen T6/Leu-6 (hTa1 thymocyte antigen) CD1A
Uniprot ID :	P06126

Application

Reactivity:	Human
Tested Application:	FC

Recommended dilution: Volume per test: 5µL. Each lot of this antibody is quality control tested by flow cytometric analysis. The amount of the reagent is suggested to be used 5 µL of antibody per test (million cells in 100 µL staining volume or per 100 µL of whole blood). Please check your vial before the experiment. Since applications vary, the appropriate dilutions must be determined for individual use.

Image:



Human T lymphoblastic leukemia cell line Molt-4 are stained with FITC Anti-Human CD1a Antibody (filled red histogram) or Mouse IgG1 Isotype Control FITC (empty black histogram).