

FITC Anti-Human CD62L Antibody(DREG56)

Product Information

Catalog No.:	FITC-30091
Conjugation:	FITC
Size:	20T/100T
Form:	liquid
Host:	Mouse
Clonality:	monoclonal
Clone ID:	DREG56
IsoType:	IgG1, kappa
Storage:	PBS with 0.1% sodium azide, 1%BSA, pH 7.3, 2-8°C for 12 months (Avoid repeated freeze / thaw cycles.)

Immunogen information

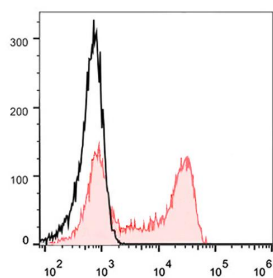
Synonyms:	L-selectin CD62 antigen-like family member L Leukocyte adhesion molecule 1 (LAM-1) Leukocyte surface antigen Leu-8 Leukocyte-endothelial cell adhesion molecule 1 (ECAM1) Lymph node homing receptor TQ1 gp90-MEL SELL LNHR LYAM1
Uniprot ID :	P14151

Application

Reactivity:	Human
Tested Application:	FC

Recommended dilution: Volume per test: 5µL. Each lot of this antibody is quality control tested by flow cytometric analysis. The amount of the reagent is suggested to be used 5 µL of antibody per test (million cells in 100 µL staining volume or per 100 µL of whole blood). Please check your vial before the experiment. Since applications vary, the appropriate dilutions must be determined for individual use.

Image:



Human peripheral blood lymphocytes are stained with FITC Anti-Human CD62L Antibody (filled red histogram). Unstained lymphocytes (empty black histogram) are used as control.