

## FITC Anti-Human IL-10 Antibody(JES3-9D7)

### Product Information

Catalog No.:	FITC-30088
Conjugation:	FITC
Size:	20T/100T
Form:	liquid
Host:	Rat
Clonality:	monoclonal
Clone ID:	JES3-9D7
IsoType:	IgG1, kappa
Storage:	PBS with 0.1% sodium azide, 1%BSA, pH 7.3, 2-8°C for 12 months (Avoid repeated freeze / thaw cycles.)

### Immunogen information

Synonyms:	Interleukin-10 (IL-10) Cytokine synthesis inhibitory factor (CSIF) IL10
Uniprot ID :	P22301

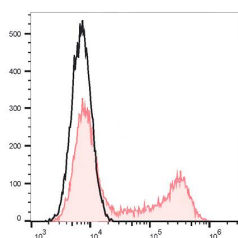
### Application

Reactivity: Human

Tested Application: FC

Recommended dilution: Volume per test: 5µL. Each lot of this antibody is quality control tested by flow cytometric analysis. The amount of the reagent is suggested to be used 5 µL of antibody per test (million cells in 100 µL staining volume or per 100 µL of whole blood). Please check your vial before the experiment. Since applications vary, the appropriate dilutions must be determined for individual use.

Image:



HEK293T cells transiently transfected with pcDNA3.1 plasmid encoding Human IL-10 gene are stained with FITC Anti-Human IL-10 Antibody(filled red histogram) or FITC Rat IgG1, κ Isotype Control (empty black histogram).

