

FITC Anti-Mouse CD62L Antibody(Mel14)

Product Information

Catalog No.:	FITC-30084
Conjugation:	FITC
Size:	50T/100T
Form:	liquid
Host:	Rat
Clonality:	monoclonal
Clone ID:	Mel14
IsoType:	IgG2a, kappa
Storage:	PBS with 0.1% sodium azide, 1%BSA, pH 7.3, 2-8°C for 12 months (Avoid repeated freeze / thaw cycles.)

Immunogen information

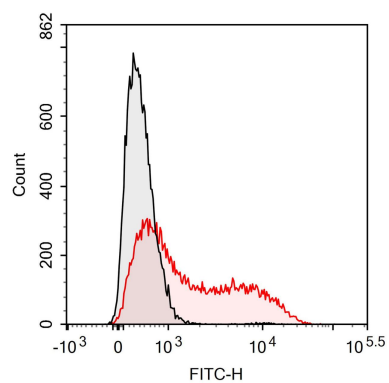
Synonyms:	L-selectin Sell CD62 antigen-like family member L LAM-1 LECAM1 Lymph node homing receptor Ly-22 CD62L Lnhr Ly22
Uniprot ID :	P18337

Application

Reactivity:	Mouse
Tested Application:	FC

Recommended dilution: Volume per test: 5µL. Each lot of this antibody is quality control tested by flow cytometric analysis. The amount of the reagent is suggested to be used 5 µL of antibody per test (million cells in 100 µL staining volume or per 100 µL of whole blood). Please check your vial before the experiment. Since applications vary, the appropriate dilutions must be determined for individual use.

Image:



KM murine splenocytes are stained with FITC Anti-Mouse CD62L Antibody (red histogram) or FITC Rat IgG2a, κ Isotype Control (black histogram).