

FITC Anti-Human CD29(TS2/16.2.1)

Product Information

Catalog No.:	FITC-30070
Conjugation:	FITC
Size:	50T/100T
Form:	liquid
Host:	Mouse
Clonality:	monoclonal
Clone ID:	TS2/16.2.1
IsoType:	IgG1, kappa
Storage:	PBS with 0.1% sodium azide, 1%BSA, pH 7.3, 2-8°C for 12 months (Avoid repeated freeze / thaw cycles.)

Immunogen information

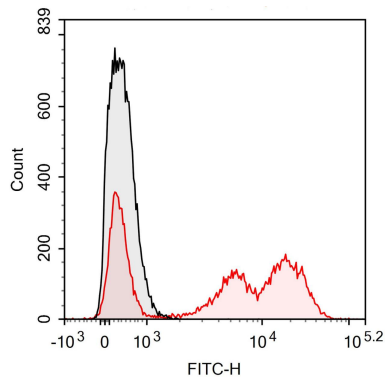
Synonyms:	Integrin beta-1 ITB1 Itgb1 Fibronectin receptor subunit beta VLA-4 subunit beta CD29
Uniprot ID :	P05556

Application

Reactivity:	Human
Tested Application:	FC

Recommended dilution: Volume per test: 5µL. Each lot of this antibody is quality control tested by flow cytometric analysis. The amount of the reagent is suggested to be used 5 µL of antibody per test (million cells in 100 µL staining volume or per 100 µL of whole blood). Please check your vial before the experiment. Since applications vary, the appropriate dilutions must be determined for individual use.

Image:



Human peripheral blood lymphocytes are stained with FITC Anti-Human CD29 Antibody (red histogram). Unstained lymphocytes (black histogram) are used as control.