

FITC Anti-Human CD14(M5E2)

Product Information

Catalog No.:	FITC-30058
Conjugation:	FITC
Size:	50T/100T
Form:	liquid
Host:	Mouse
Clonality:	monoclonal
Clone ID:	M5E2
IsoType:	IgG2a, kappa
Storage:	PBS with 0.1% sodium azide, 1%BSA, pH 7.3, 2-8°C for 12 months (Avoid repeated freeze / thaw cycles.)

Immunogen information

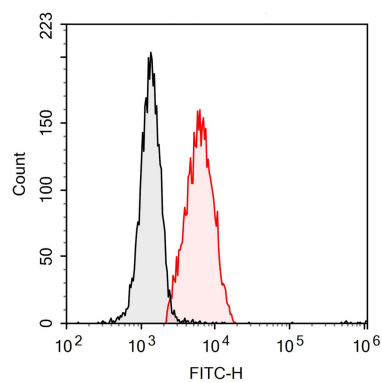
Synonyms:	Monocyte differentiation antigen CD14 CD14 Myeloid cell-specific leucine-rich glycoprotein
Uniprot ID :	P08571

Application

Reactivity:	Human
Tested Application:	FC

Recommended dilution: Volume per test: 5µL. Each lot of this antibody is quality control tested by flow cytometric analysis. The amount of the reagent is suggested to be used 5 µL of antibody per test (million cells in 100 µL staining volume or per 100 µL of whole blood). Please check your vial before the experiment. Since applications vary, the appropriate dilutions must be determined for individual use.

Image:



Staining of normal human peripheral blood cells with FITC Anti-Human CD14 Antibody(M5E2) (red histogram) or FITC Mouse IgG2a, κ Isotype Control (black histogram). Cells in the monocyte gate were used for analysis.