

## FITC Anti-Human CD38(HIT2)

### Product Information

Catalog No.:	FITC-30037
Conjugation:	FITC
Size:	50T/100T
Form:	liquid
Host:	Mouse
Clonality:	monoclonal
Clone ID:	HIT2
IsoType:	IgG1, kappa
Storage:	PBS with 0.1% sodium azide, 1%BSA, pH 7.3, 2-8°C for 12 months (Avoid repeated freeze / thaw cycles.)

### Immunogen information

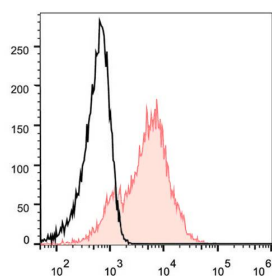
Synonyms:	ADP-ribosyl cyclase/cyclic ADP-ribose hydrolase 1 CD38 2'-phospho-ADP-ribosyl cyclase 2'-phospho-cyclic-ADP-ribose transferase ADP-ribosyl cyclase 1 ADPRC 1 Cyclic ADP-ribose hydrolase 1 cADPr hydrolase 1 T10 CD3
Uniprot ID :	P28907

### Application

Reactivity:	Human
Tested Application:	FC

Recommended dilution: Volume per test: 5µL. Each lot of this antibody is quality control tested by flow cytometric analysis. The amount of the reagent is suggested to be used 5 µL of antibody per test (million cells in 100 µL staining volume or per 100 µL of whole blood). Please check your vial before the experiment. Since applications vary, the appropriate dilutions must be determined for individual use.

Image:



Human peripheral blood lymphocytes are stained with FITC Anti-Human CD38 Antibody (filled red histogram). Unstained lymphocytes (empty black histogram) are used as control.