

FITC Anti-Mouse Ly6G(1A8)

Product Information

Catalog No.:	FITC-30028
Conjugation:	FITC
Size:	50T/100T
Form:	liquid
Host:	Rat
Clonality:	monoclonal
Clone ID:	1A8
IsoType:	IgG2a, kappa
Storage:	PBS with 0.1% sodium azide, 1%BSA, pH 7.3, 2-8°C for 12 months (Avoid repeated freeze / thaw cycles.)

Immunogen information

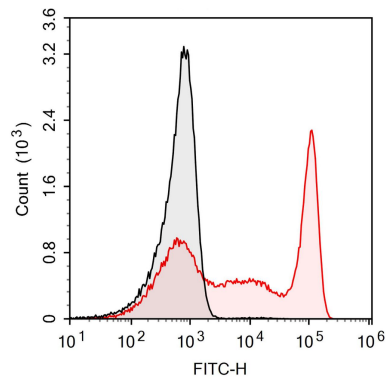
Synonyms:	Lymphocyte antigen 6G Ly-6G Ly-6G.1 Ly6g
Uniprot ID :	P35461

Application

Reactivity:	Mouse
Tested Application:	FC

Recommended dilution: Volume per test: 5µL. Each lot of this antibody is quality control tested by flow cytometric analysis. The amount of the reagent is suggested to be used 5 µL of antibody per test (million cells in 100 µL staining volume or per 100 µL of whole blood). Please check your vial before the experiment. Since applications vary, the appropriate dilutions must be determined for individual use.

Image:



KM mouse bone marrow cells are stained with FITC Anti-Mouse Ly6G Antibody (red histogram). Unstained bone marrow cells (black histogram) are used as control.