

FineTest®647 Anti-Human CD20 (BCA/B20)

Product Information

Catalog No.:	F647-30007
Conjugation:	FineTest®647
Size:	20T/100T
Form:	liquid
Host:	Mouse
Clonality:	monoclonal
Clone ID:	BCA/B20
IsoType:	IgG2a, kappa
Storage:	PBS with 0.1% sodium azide, 1%BSA, pH 7.3, 2-8°C for 12 months (Avoid repeated freeze / thaw cycles.)

Immunogen information

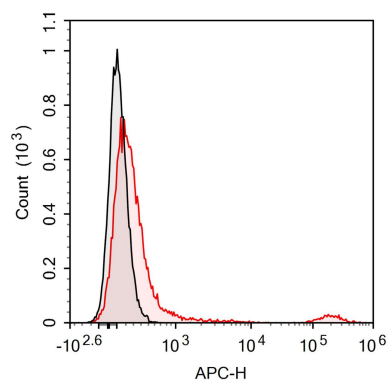
Synonyms:	B-lymphocyte antigen CD20 MS4A1 B-lymphocyte surface antigen B1 Bp35 Leukocyte surface antigen Leu-16 Membrane-spanning 4-domains subfamily A member 1 MS4A1 CD20
Uniprot ID :	P11836

Application

Reactivity:	Human
Tested Application:	FC

Recommended dilution: Volume per test: 5µL. Each lot of this antibody is quality control tested by flow cytometric analysis. The amount of the reagent is suggested to be used 5 µL of antibody per test (million cells in 100 µL staining volume or per 100 µL of whole blood). Please check your vial before the experiment. Since applications vary, the appropriate dilutions must be determined for individual use.

Image:



Human peripheral blood lymphocytes are stained with FineTest®647 Anti-Human CD20 Antibody (red histogram). Unstained splenocytes (black histogram) are used as control.